

On-campus research internships for exchange students (honors program): Chemistry & Biology, Physics, Mathematics & Computer Sciences

Lecture period of the summer semester (April –
July), a later start than April is possible!

„Broaden your horizon and get involved in a current project in Chemistry, Biology, Physics, Mathematics or Computer Sciences!“

Greetings from Wuppertal, Germany!

Looking for a meaningful internship experience with a research team in a lab?

Join us in Wuppertal, enhance your employability by boosting your research skills while exploring the region, Germany and the neighboring European countries. We are happy to announce this special opportunity developed for students as part of the university partnership.



WELCOME TO WUPPERTAL

Wuppertal, one of the 20 best places to visit

„Wuppertal is one of the greenest cities of Germany and has an extraordinary ace up its sleeve - one of the world's coolest rail systems. The city's 120-year-old Schwebebahn (suspension railway) looks like something from the imagination of Jules Verne.“

[CNN Travel](#)

Germany is known for its high-quality education, excellent research environment, and cosmopolitan and diverse society. It is home to more than 82 million people. Wuppertal, situated in North Rhine-Westphalia (NRW), which is economically the most significant German state with an outstanding educational and cultural landscape, is one of Germany's largest university towns with some 350,000 inhabitants. It is an interesting mixture of outgoing metropolis and cosy village with a lot of leisure facilities. Due to the excellent train and transport network, You can travel within one hour from Wuppertal to Cologne, Bonn, Dortmund, Düsseldorf and many other cities.

One of the biggest attractions in Wuppertal is the suspension railway line which carries passengers 12 metres over and above the Wupper River from downtown to the surrounding city districts. The cars are suspended from a rail with wheels integrated into the roof which makes you feel as if you are floating in the air.

This former industrial city looks back at an eventful history. The water power of the Wupper River was in every respect the formative element for the town. It is the basis of Wuppertal's unique industrial history. The German philosopher Friedrich Engels is one of Wuppertal's most famous sons; you can learn more about his life and achievements at the *Engels House*. The *Von der Heydt Art Museum* is worth visiting for its impressive architecture alone, as is the *Historische Stadthalle Wuppertal*, which is acoustically among the best concert halls in Europe. Enjoy the easy-going atmosphere of the city on a long stroll through downtown and the many gardens, parks and woods. Wuppertal is one of the most green major cities in Germany. Five Wuppertal parks are part of the European Garden Network EGHN - more than of any other European city.

Altogether, Wuppertal is a great place for recreation and relaxation. If you like hiking and enjoying nature, but also want the city-life experience, you'll find ideal conditions for studying here.

[NRW Tourism](#)

[Wuppertal tourism and city information](#)

[Stadthalle Wuppertal](#)

THE UNIVERSITY OF WUPPERTAL

The University of Wuppertal is one of the state universities in North-Rhine-Westphalia. Founded in 1972 it celebrates its 50th anniversary in 2022. The university excels in producing high quality, innovative research that translates into benefits both locally and worldwide. Its academic culture is marked by diversity, experience and innovation - a perfect environment for developing inspiring ideas and academic projects that will shape the future. The close relationship between the University and regional as well as global enterprises provide interesting internship, research and employment opportunities.

The University with its 9 schools, 31 departments and 44 research institutes offers a diverse range of study programs in science, engineering economics and the humanities, as well as educational science, design and architecture. Some 23,000 students from more than 100 countries benefit from the high-level academic approaches in teaching. The University's Language Learning Institute offers German language classes for all levels.

[More information about the University of Wuppertal](#)

INTERNATIONAL COOPERATION

Internationality is a key strategic feature of the University's profile. Teaching and research activities are internationally oriented. The University of Wuppertal is part of many networks and partnerships around the world. All partnerships aim for sustainable collaboration and development in research and teaching and not only provide exchange opportunities for students and researchers but also offer joint study, doctoral and research projects.



ABOUT THE PROJECTS

Students will be involved in a current research project at the School of Mathematics and Natural Sciences.

Our departments of chemistry & biology, physics, as well as mathematics & computer sciences offer many exciting projects. Whether you are interested in the discovery of new materials, the biology of ecosystems, atmospheric sciences, the synthesis of new compounds, the chemistry of our food or the effects of compounds on cells and diseases, or computer simulation in science, you will certainly find just the right match for you.

You can find more details about our research groups on our webpage at <https://uni-w.de/quptt>. Take a look around and find out what interests you the most! Along with your application, send us a list of your three preferred research groups in which you would like to complete your internship.

The working language of the internships is English.



APPLICATION

Application documents:

- ✓ CV
- ✓ Letter of Motivation
- ✓ Letter of Recommendation from a professor
- ✓ Current Transcript of Records

Application documents have to be submitted by the exchange coordinator/International Office of the partner university. Please, send application documents (PDF) to:

Mrs. Nina Phlippen: phlippen@uni-wuppertal.de

Application Deadline: End of first week of March every year.

For questions regarding the internships, please contact:

Bergische Universität Wuppertal / University of Wuppertal
Gauss-Str. 20
42119 Wuppertal
Germany

Mrs. Nina Phlippen

Phone: 0049-(0)202-439-5706

Email: phlippen@uni-wuppertal.de

Important: Interested students have to be enrolled as exchange students (non-degree seeking guest students) and for the current Summer Semester in order to participate in the on-campus internship program!

Possible funding for exchange students in this program:

- OPTION 1: If specific preconditions are met (minimum duration 2 months, stay must be terminated before 31 July – please get in touch with your Center for Global Engagement!), students coming for a research internship may apply for participation in the Erasmus+ Program and receive funding amounting to 850 EUR per month plus 820 EUR for travel costs.
- OPTION 2: The semester fee including the ticket for the use of public transport in the whole state of North Rhine-Westphalia will be covered by the University of Wuppertal. Accommodation will be covered by the University of Wuppertal.



ORGANISATIONAL

Accommodation

The accommodation will be organised by the University of Wuppertal and will either be on campus or close to campus.

International student ID card

If you do not yet have an international [student ID card](#) please apply for one in good time before your trip and always carry it with you during the trip.

Digital Campus Tour and University App

For easier orientation use the University of Wuppertal [digital campus tour](#) and [university app](#).

Hygiene rules / mask wearing

It can be assumed that it will continue to be necessary to wear a medical mask (surgical mask) when entering buildings and moving around in common areas. This does not apply at the seat during smaller examinations if the minimum distance is observed. So please ensure that You have an adequate number of medical masks with you on your journey and that you always have a medical face mask at hand. In addition, the other general hygiene rules, e.g. on hand disinfection, must be observed.

Safety Instructions

When you come to another country, many things are new and unknown. We want international students to feel safe and comfortable in Wuppertal and therefore familiarise them with the most important [safety instructions](#).



LEGAL

Limitation of Liability

All participants must have adequate health, accident and liability insurance throughout their stay. The University of Wuppertal does not provide any insurance cover and excludes any kind of liability.

The University of Wuppertal will not be liable for any injury sustained which was caused by another student or by any person.

The University of Wuppertal will not be liable for any loss or damage to student's personal property (including computer equipment and software), including any financial or other consequential loss where such loss or damage. It is recommended, that you insure personal property against such risk of loss and damage.

Your Data

The University of Wuppertal will process your personal data in accordance with the German Data protection legislation, and our data protection policies contained in the relevant documents. We may share your data with third parties (University of Michigan-Flint, student dormitory).

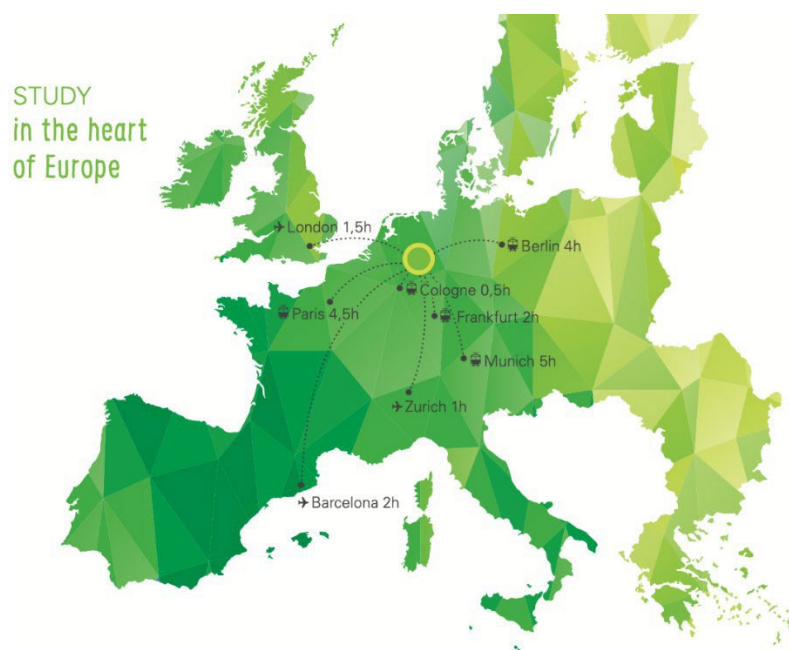
FURTHER INFORMATION

[Campus Arena Bergische Universität Wuppertal](#)

[Study in Germany](#)

[Study in Germany / plan your study](#)

[International Students University of Wuppertal](#)



CONTACT

International Center

Mrs. Nina Phlippen

UniService Internationales

Gauss-Str. 20 - Building O, Floor 6, Room 13

42119 Wuppertal, Germany

Phone: 0049-(0)202-439-5706

E-Mail: phlippen@uni-wuppertal.de



Photos:

Rüdiger Nehmzow (Seite 3, 4, 7), Jepp Haensel (Seite 1, Sebastian Jarych (Seite 4, 5, 8), BUW (Seite 7), Marketing Wuppertal (Seite 5)